

Multifunctional pure skin solution

STAR ANISE EXTRACT

Star Anise Extract is a natural ingredient derived from *Illicium Verum* Fruit with a titrated content of Shikimic Acid, combining **5 synergistic activities** in one ingredient.

Its strong **sebum-normalizing** properties counteract the excessive production of sebum without over stripping the protective superficial layer, while its **antibacterial** activity against *Propionibacterium Acnes* avoids the duct obstruction.

Its specific **activity on IL-1 α** and its **antioxidant** properties reduce the inflammatory response caused by the abnormal accumulation of bacteria in the pilosebaceous unit.

The **exfoliating** activity completes the action of the ingredient, renewing skin and making it smoother and more uniform.

- Sebum-normalizing
- Anti-bacterial
- Anti-inflammatory
- Antioxidant
- Exfoliating



Snerga
SKIN EVOLUTION

STAR ANISE EXTRACT

EFFICACY TESTS

IN VITRO

MIC Propionibacterium acnes = 2 %

- 79 % IL-1α release*

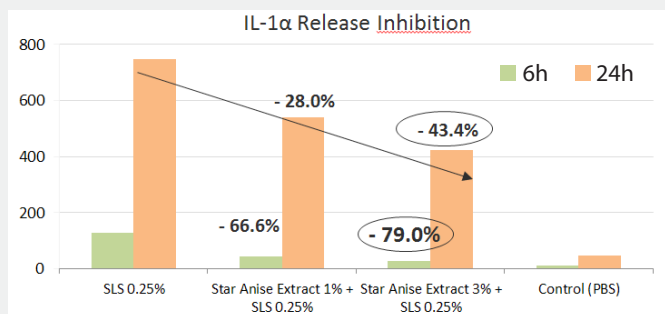


Figure 1: *In vitro* test of Star Anise Extract 3%: evaluation of anti-inflammatory potential on reconstructed human epidermis after 6 and 24 hours.

IN VIVO**

- 32 % decrease in the amount of sebum

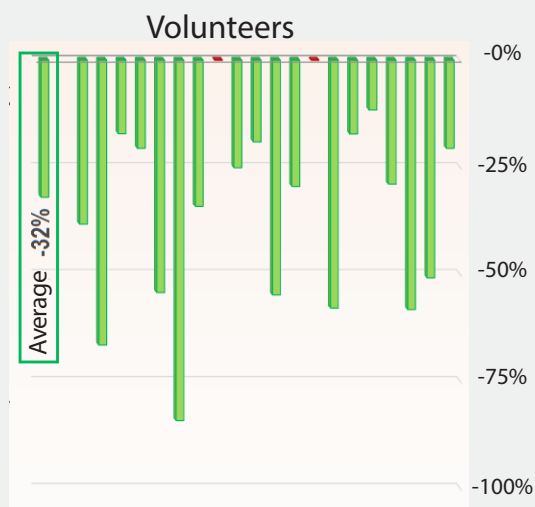


Figure 2: *In vivo* test of Star Anise Extract 2%: variation of sebum levels on the cheeks of 20 volunteers after 30 days.

- 25.7 % decrease in the number of comedones

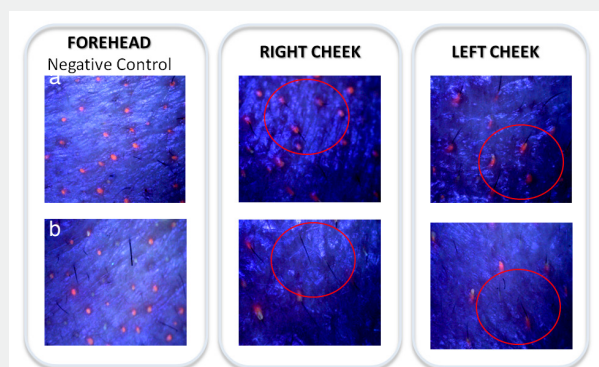


Figure 3: *In vivo* test of Star Anise Extract 2%: a) before treatment; b) 30 days of treatment twice a day.

INCI NAME

Illicium Verum (Anise) Fruit Extract (and) Maltodextrin

SPECIFICATIONS

Appearance: powder
Color: from beige to light brown
Odor: characteristic
pH (SOL 3%): 2.5 - 4.0
Suggested dosage: 1 - 3%

MAIN APPLICATIONS

Sebonormalizing formulations and as an adjuvant treatment in anti-acne products, whatever form: cream, gel and serum.

ANTI-IMPERFECTION SERUM GEL

LSIN 7139

INGREDIENTS	PHASE	%w/w
Aqua/Water	A	79,90
Panthenol (and) Glycerin		1,00
Xanthan Gum		0,50
Sodium Benzoate		0,40
Gluconolactone, Sodium Benzoate		1,00
Sodium Stearoyl Glutamate	B	1,50
Glyceryl Stearate Citrate		1,50
Cetearyl Alcohol		1,00
Coco-Caprylate		1,00
Dicaprylyl carbonate		1,00
Caprylic/Capric Triglyceride		1,00
Aqua/Water	C	8,00
STAR ANISE EXTRACT (Illicium Verum (Anise) Fruit Extract (and) Maltodextrin)		2,00
Bisabolol	D	0,20

METHOD

Weight phase A dispersing Xanthan Gum at 75°C. Heat phase B, then add it under homogenizer, until it forms a homogeneous system. Cool down at 40°C, then add C and D (at 30 °C). If necessary, adjust the pH.

CHARACTERISTICS

Appearance: semifluid emulsion
Colour: white
Odor: characteristic
pH: 4.50 - 5.00
Brookfield viscosity RT 4 RPM 20: 3950 - mPa·s

* 3% Star Anise Extract T6h

** Formulation with 2% Star Anise Extract